

# **HUBER**

## **TECHNOLOGY**

**WASTE WATER** Solutions

*CUSTOMER SERVICE,  
MAINTENANCE & HIRE BROCHURE*

[www.huber.co.uk](http://www.huber.co.uk)

# HUBER

## TECHNOLOGY

WASTE WATER Solutions

### WE PROVIDE

### *SUSTAINABLE WASTE WATER SOLUTIONS*

**HUBER Technology is a leading supplier of stainless steel waste water treatment equipment. Our extensive experience enables us to offer high quality solutions for all your effluent waste water requirement needs for both Municipal and Industrial markets.**

Our equipment is designed and manufactured at our parent company's extensive production facility in Germany and customised at our head office in Wiltshire.

### THE RANGE OF

### *PROUDCTS INCLUDES:*

- Solids and screenings removal fine screens, coarse screens and micro screens.
- Washing, conveying and compacting of solids and screenings.
- Sludge screening, thickening, dewatering and drying.
- Grit removal and treatment.
- Tertiary treatment.
- Anaerobic digestion, pre and post digestion treatment.
- Industrial waste water treatment.

Our head office is based in Chippenham, Wiltshire and we have regional service depots in Rotherham, Perth and Portadown, Ireland. A range of hire units are available from our centrally located service office in Rotherham.

**For further information and  
any enquiries please contact us on:**

01249 765000 | [rotamat@huber.co.uk](mailto:rotamat@huber.co.uk) | [www.huber.co.uk](http://www.huber.co.uk)

# CUSTOMER SERVICE

*Where quality & service spring to mind!*

- Close to our customer with our head office in Chippenham, Wiltshire and regional Service depots in Rotherham, Perth and Ireland.
- Serving our customers' needs.
- Ensured machine efficiency.
- Protect your investment with HUBER Service.

The HUBER Service Department has been established to serve our customers across the UK and Ireland. It enables us to maintain the high level of performance that our customers have come to expect.

At HUBER, we go beyond simply supplying products. We work with our customers to ensure the optimal operation, functionality and performance of our machines. We pride ourselves on providing the appropriate solutions to customers' problems. Our after-sales service helps ensure trouble free operation of our machines throughout their lifetime.



## REPAIR & REFURBISHMENT

- Inspection of machines.
- Fully qualified and trained personnel.
- Majority of repairs carried out on site.
- Comprehensive report on completion of service.
- Professional and friendly advice.
- Helpful advice for screen optimisation.
- Hire machines available on request.

## SPARES

- Large stock held in the UK.
- Next day delivery for a stock held item.
- Genuine manufacturers' parts.
- Personal attention for your spares enquiries.
- Direct contact of dedicated professional spares co-ordinator.
- Bonded stock available on request.
- Full service history for each machine.

## SERVICE/MAINTENANCE

- Service tailored to suit individual requirements.
- Detailed quotations.
- Competitive prices.
- Fast and effective response time.
- Regional service depots ensuring swift response within your area.
- Full and comprehensive reports.
- Service/maintenance contracts available on request.

We know that customer loyalty is not only built on excellent product quality, but also on the motivation of a manufacturer to offer life-long product assistance.

# HUBER

## TECHNOLOGY

WASTE WATER Solutions

### HIRE UNITS

## HUBER R03 SLUDGE ACCEPTANCE PLANT

### PACKAGED SLUDGE SCREENING

Tank mounted sludge screens complete with control panel, level controls and flow control valve. Suitable for screening of primary sludge, imported sludge and septic tank waste. Can also be used during over-pumping for screening raw sewage.

Robust stainless steel construction and fully frost protected.

### SPECIFICATION

### R03/1200/6

Flow capacity (sludge@3% d.s.)	80 l/s
Bar spacing	6mm
Screenings capacity	2m <sup>3</sup> /hr
Inlet connection	DN150/PN16 flange
Outlet connection	DN300/PN16 flange
Washwater connection/required supply	1¼ BSP/2.6 l/s@4-7 bar
Electrical supply	20Amp x 400V-50HZ (3ph+N+E)
Dry weight	1800kg

### HIRE COSTS - PLEASE CONTACT US FOR HIRE COSTS



For any more information or enquiries please do not hesitate to contact our Hire Department on:

01709 835532 | 07802 459307 | [kevin.benson@huber.co.uk](mailto:kevin.benson@huber.co.uk) | [www.huber.co.uk](http://www.huber.co.uk)

# HUBER

## TECHNOLOGY

WASTE WATER Solutions

### HIRE UNITS

## HUBER WAP-L/SL

### SCREEN HANDLING PLANT

Skid mounted screenings handling plant complete with control panel and discharge chute. Suitable for dry feed or launder feed.

Robust stainless steel construction.

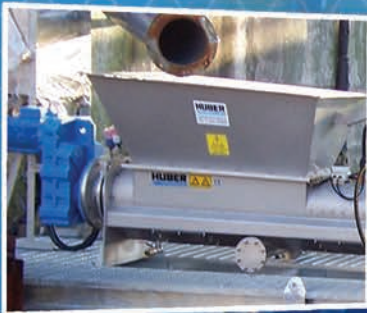
### SPECIFICATION

Screenings capacity  
Maximum launder flow  
Screenings dewatering  
Washwater connection/required supply  
Electrical supply  
Drain connection  
Skid size (excl. chute)  
Dry weight

### WAP-L/BG6

up to 6m<sup>3</sup>/hr  
12.5 l/s  
30-40 % d.s.  
25mm hose tail/2.5 l/s@3-7 bar  
32Amp x 400V-50Hz (3ph+N+E)  
DN100 Bauer coupling  
3200 x 1600mm  
1600Kg

**HIRE COSTS - PLEASE CONTACT US FOR HIRE COSTS**



For any more information or enquiries please do not hesitate to contact our Hire Department on:

01709 835532 | 07802 459307 | [kevin.benson@huber.co.uk](mailto:kevin.benson@huber.co.uk) | [www.huber.co.uk](http://www.huber.co.uk)

# HUBER

## TECHNOLOGY

WASTE WATER Solutions

### HIRE UNITS

## HUBER R09 COMBINED SCREENING

### COMBINED SCREEN

Inlet screen for flows up to 130 l/s. The screen incorporates screenings washing, conveying and dewatering. Available with 3mm or 6mm perforated mesh.

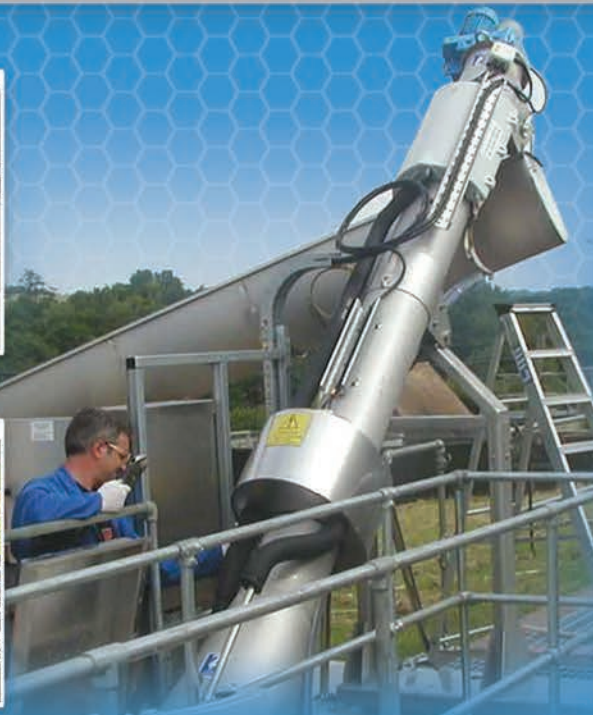
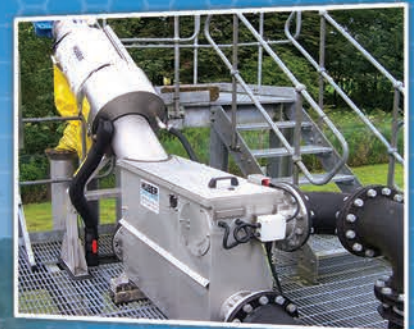
Robust stainless steel construction and fully frost protected.

### SPECIFICATION

### R09 COMBINED SCREENED

Flow capacity	Up to 130 l/s
Screening capacity channel width	300 - 500mm
Electrical supply	20 AMP, 400V, 3ph+N+E 50hz
Washwater connection	1 1/4 BSP (supply pressure: 4-7 bar max.)
Washwater consumption	2 l/s @ 4-7 bar
Dry weight	Up to 390kg

**HIRE COSTS - PLEASE CONTACT US FOR HIRE COSTS**



For any more information or enquiries please do not hesitate to contact our Hire Department on:

01709 835532 | 07802 459307 | [kevin.benson@huber.co.uk](mailto:kevin.benson@huber.co.uk) | [www.huber.co.uk](http://www.huber.co.uk)