

[Home](#) ■ [Products](#) ■ [Screens and Fine Screens](#) ■ [STEP SCREEN®s](#) ■ [HUBER Fine Screen STEP SCREEN® SSF](#)

## HUBER Fine Screen STEP SCREEN® SSF



The suitable machine for any application due to variable installation angle

- for high separation efficiencies
- for any flow rate
- easy and reliable screenings transport
- with optional lifting of screenings at channel bottom level

The variable installation angle ensures

- optimal adjustment to individual hydraulic conditions, such as limited upstream levels due to preceding pumping stations
- operating reliability due to tailor-made layout

The STEP SCREEN® System is widely accepted and successful due to its function and easy-to-follow operation principle as well as the simple cleaning method without any aids (self-cleaning effect according to the counter-current principle). It is furthermore easy to maintain and able to handle extremely big screenings volumes whilst it also offers a high operational reliability.

The motor linkage drive has been developed from the well-proven and patented link system. To the benefit of our customers we intentionally avoided difficult-to-maintain chain drives. With the new linkage type we are able to master the occurring bending moments

on the lamellae, especially with high water levels.

## Benefits

### BENEFITS OF THE FLEXIBLE HUBER FINE SCREEN STEP SCREEN® SSF:

- **Functional principle:**
  - Lifting of screenings at bottom level due to a special bottom step design
  - Gentle and complete screenings transport due to the counter-current principle
- **Retrofitting / new plants:**
  - Optimally adjustable to individual hydraulic conditions due to the variable installation angle
- **Flow rate:**
  - High capacity; the flow passes the screen surface only once
- **Separation efficiency:**
  - High separation efficiency due to the narrow slot width and the produced screenings carpet
- **Cleaning:**
  - Self-cleaning effect due to moveable lamellae (no spray water, no brushes)
- **Operational stability:**
  - Reduced susceptibility to grit, gravel and stones due to the bottom step washing system
- **Pivoted screen:**
  - Without the need to remove the subsequent wash press or transport unit
- **Protection against corrosion:**
  - Manufactured from stainless steel and acidtreated in a pickling bath
- **Experience:**
  - Unrivalled for more than 20 years

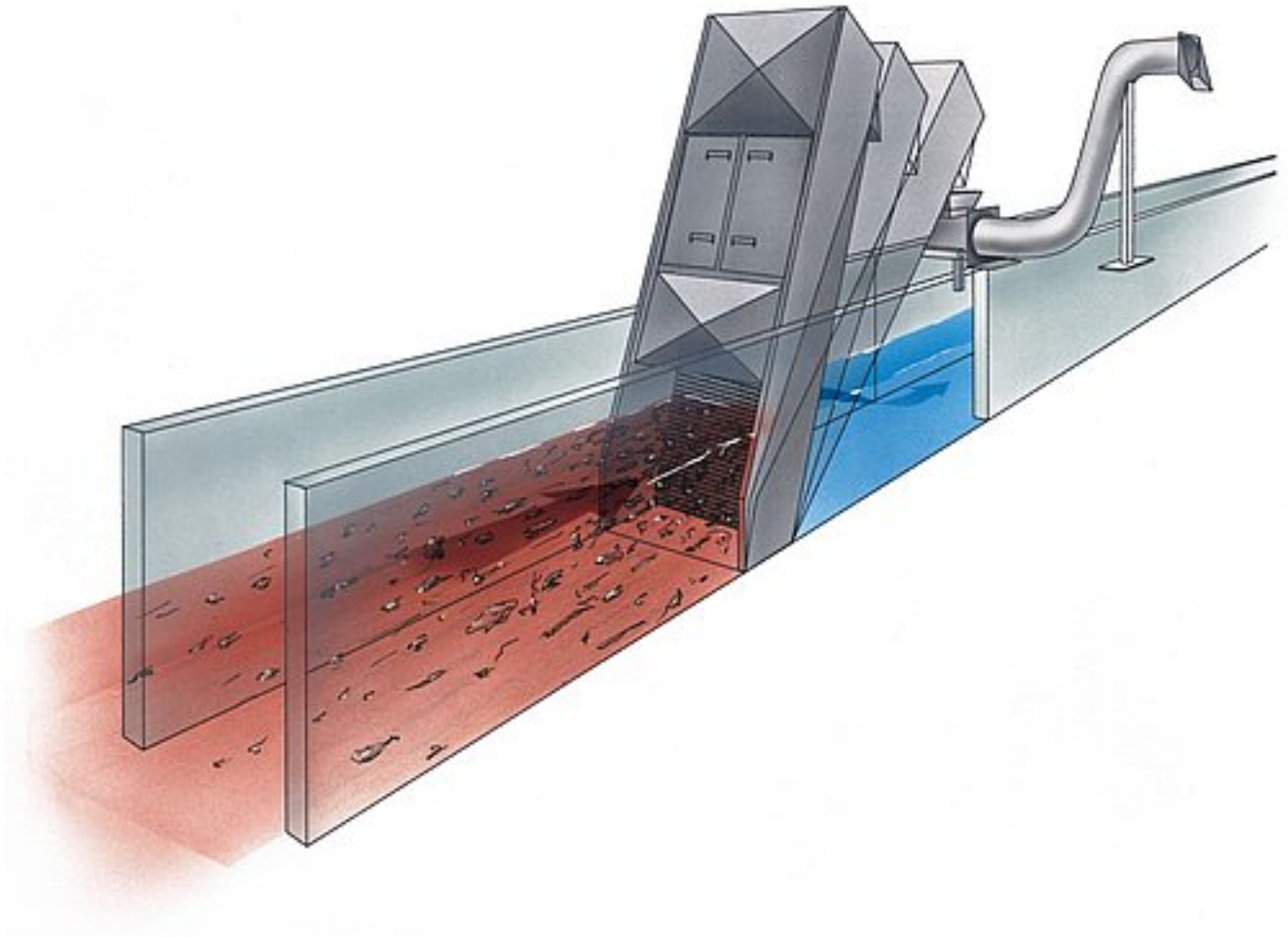
## Downloads

 [Brochure: STEP SCREEN® Flexible SSF](#) [pdf, 398 KB]

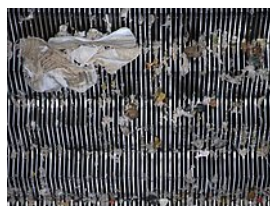
## Case Studies

- [HUBER supplies the machines for the mechanical treatment stage of the worlds' largest wastewater treatment plant project](#)

## Design Sketch



## Media



**More products of this group: STEP SCREEN®s**

- [HUBER Fine Screen STEP SCREEN® SSV](#)

---

琥珀环保技术（太仓）有限公司 地址：江苏省太仓市弇山东路 83 号 邮编 215400

Huber Environmental Technology (Taicang) Co.,Ltd.

No. 83 Yanshan East Road Taicang Jiangsu Province, 215400 PR China

Member of the HUBER group:  
www.huber.de

Tel: +86 512 5367 0301, +86 512 5367 0309 Email: [info@huber.cn.com](mailto:info@huber.cn.com) Internet: <http://www.huber.cn.com>

---